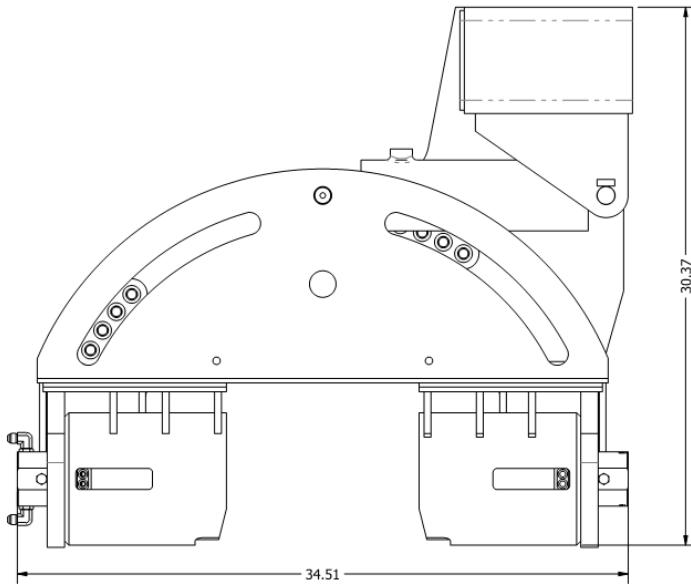
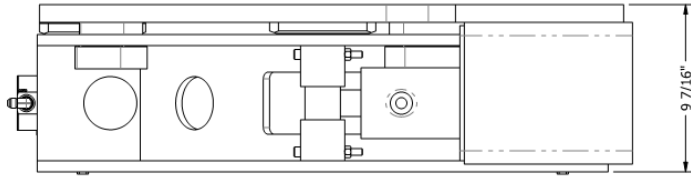


BREAKER

MODEL: CTPW-1075



DESCRIPTION

To makeup or breakout a connection is one of the most dangerous jobs on a rig floor. The CTPW-1075 power wrench is designed to break or make up tubular connections without any manual operation. It can be moved into the well center at the bottom of the drilling rig by swinging or sliding.

SPECIFICATION

- Working ranges: 10 ¾ - 5 ½" (273 - 140 mm); 6 ½" - 2 3/8" (165 - 60 mm)
- Max hydraulic working pressure: 3,000 psi (15.5 MPa)
- Max clamping force: 82,172 lbf (365.5 kN)
- Max break torque: 50,250 lbf-ft (68 kNm)
- Max make-up torque: 43,000 lbf-ft (58.3 kNm)
- Max rotation angle: 30°
- Weight: 620 lbs (280 kg), one wrench
1000 lbs (455 kg) with backup wrench

FEATURES

- Very compact design with big torque to fit small rigs
- Versatile built-in mounting features & can be mounted by swinging/sliding

Swing in/out mounting

Slide in/out mounting

